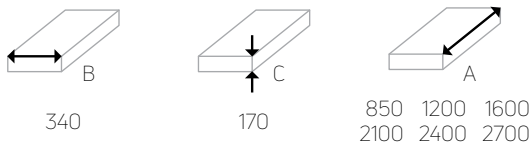


## Trench convector F4C

Model **F4C** is the **most advanced** type of trench convector which we offer. Its heat exchanger has been designed for **heating and cooling**. This is possible thanks to our **four pipe system**, two pipes for heating and two pipes for cooling. Convector works on the basis of forced convection which is provided by **24 V tangential fan**. Mostly it is used as **main source of heat**.

### dimension (in mm)



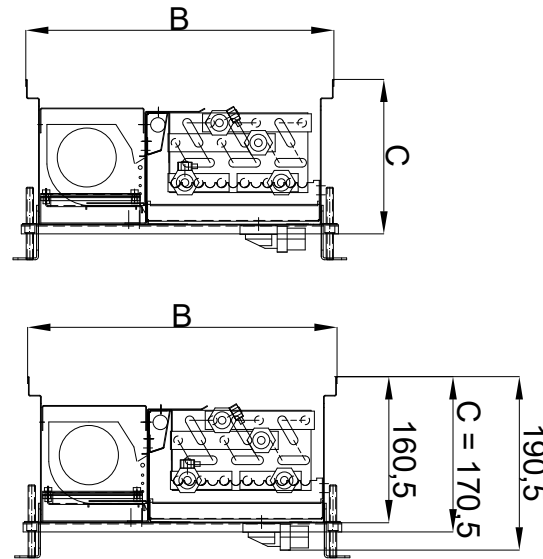
### material of the duct



\*special stainless steel AISI 316L for pool version upon request  
 \*\*duct from galvanized steel has condensate tray from stainless steel

### material of the heat exchanger

Heat exchanger is made from copper pipes and aluminium lamellas **varnished in RAL9005**. The diameter of the pipes is 9,5 mm with 0,3 mm of thickness. Endings are with 1/2" connections.



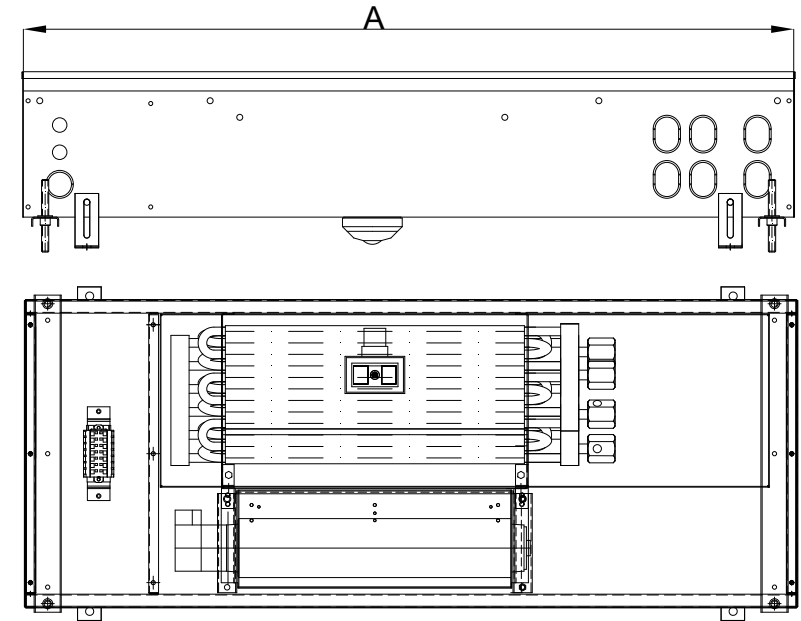
### electricity connection

Fans work with **24 VEC** and are **controlled by 0-10V**, compatible with **BMS**. They are connected to the thermostat with **RAS**. Space for electricity connection is covered by covering plate. In case of **pool version** all electrical connections are isolated in the water resistant electrical box. Water connection and electrical connection are separated from each other.

### standard delivery accessories

Height adjustment feet, raised floor height adjustment feet, rubber grommets for pre-punched connection openings, flexible stainless steel hoses with seals, drainage set, chipboard cover (protection from the dust etc. during the construction work), struts (protection from deformation while pouring concrete floor).

	heat output [W] 75/65/20°C			cooling output [W] 16/18/27°C			sound power level dB(A)			power consumption [W]	
	3	6	9	3	6	9	3	6	9		
control voltage [V]											
length A [mm]	850	524	932	1165	117	209	261	21	26	32	24
	1200	1049	1865	2331	235	418	522	22	28	34	25
	1600	1558	2770	3462	349	620	775	23	30	36	27
	2100	2221	3949	4936	497	884	1105	25	33	39	40
	2400	2715	4826	6033	608	1080	1350	26	35	41	42
2700	3255	5786	7233	729	1295	1619	27	36	42	44	



### water connection

**Right and left connection** is possible, needs to be specified. In standard there is a **bottom drainage** for condensation water, **side drainage** is possible upon the request. In case of bottom drainage additional 2 cm need to be added to the height. Standard drainage set is part of the delivery. Space for water connection is covered by covering plate. Water pipes could be connected either from the front side or longitudinal side.

### technical data

Easy connection of 2 and more convectors together, max. operating pressure 10 bar, manual air vent, possible installation to double floor (upon the request), air inlets for external source of air can be installed (upon the request), tested in accordance with **DIN EN 442**.