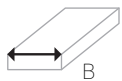


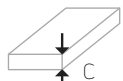
Trench convector F1S

Model F1S is the most common type of trench convector with the min. height just 75 mm. When it is necessary just to heat, F1S is the best choice. Convector works on the basis of forced convection which is provided by 24 V tangential fan, meaning that it's also possible to use with the low temperature gradient (like heat pump). Mostly it is used as main source of heat.

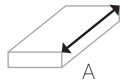
dimension (in mm)



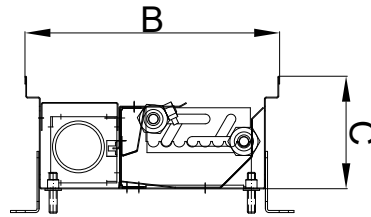
170 200 230
230 250



75
110



from 700 to 2800



electricity connection

Fans work with 24 V EC and are controlled by 0-10 V, compatible with BMS. They are connected to the thermostat with RAS. Space for electricity connection is covered by covering plate. In case of pool version all electrical connections are isolated in the water resistant electrical box. Water connection and electrical connection are separated from each other.

water connection

Right and left connection is possible, needs to be specified. Space for water connection is covered by covering plate. Water pipes could be connected either from the front side or longitudinal side.

material of the duct



galvanized steel
painted in RAL9005

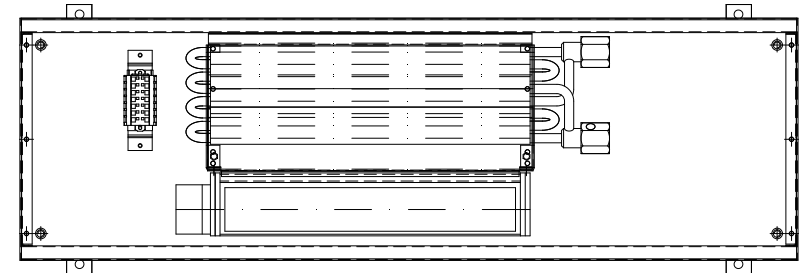
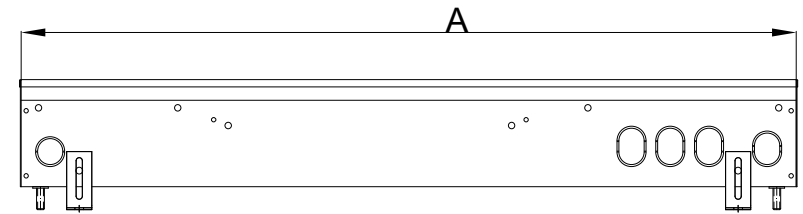


stainless steel

*special stainless steel AISI 316L for pool version upon request

heat output [W]
75/65/20°C

voltage	3			6			9			3			6			9			sound level dB(A)	consumption [W]
	B	170		200			230													
A	C = 75 mm																			
700	192	342	427	285	506	633	313	556	695	20	22	30	7,2							
1000	397	706	883	588	1046	1307	645	1147	1434	20	23	31	8,4							
1300	602	1070	1338	891	1585	1981	978	1739	2174	20	24	32	10,0							
1500	714	1269	1586	1057	1878	2348	1160	2062	2578	20	25	32	11,3							
1800	875	1555	1944	1296	2303	2879	1422	2528	3160	21	26	33	12,0							
1950	987	1754	2193	1461	2598	3247	1604	2851	3564	21	26	33	13,7							
2100	1086	1930	2413	1608	2859	3574	1765	3138	3922	21	26	33	13,7							
2300	1197	2129	2661	1773	3153	3941	1947	3461	4326	22	27	34	15,0							
2400	1297	2306	2882	1921	3414	4268	2108	3747	4684	22	27	34	15,4							
2600	1409	2504	3130	2086	3708	4635	2290	4070	5088	23	28	35	16,6							
2800	1564	2780	3475	2316	4117	5146	2542	4518	5648	23	28	35	17,8							



material of the heat exchanger

Heat exchanger is made from copper pipes and aluminium lamellas varnished in RAL9005. The diameter of the pipes is 9,5 mm with 0,3 mm of thickness. Endings are with 1/2" connections.

technical data

Easy connection of 2 and more convectors together, max. operating pressure 10 bar, manual air vent, possible installation to double floor (upon the request), tested in accordance with DIN EN 442.

standard delivery accessories

Height adjustment feet, raised floor height adjustment feet, rubber grommets for pre-punched connection openings, flexible stainless steel hoses with seals, chipboard cover (protection from the dust etc. during the construction work), struts (protection from deformation while pouring concrete floor).

voltage	3			6			9			3			6			9			sound level dB(A)	consumption [W]
	B	230		250																
A	C = 110 mm																			
700	397	706	882	541	962	1202	21	26	32	8,4										
1000	820	1458	1822	1117	1986	2482	22	28	34	11,3										
1300	1242	2209	2761	1693	3010	3763	23	30	36	12,0										
1500	1473	2619	3274	2007	3569	4461	24	31	37	13,2										
1800	1806	3211	4014	2461	4375	5469	25	33	39	17,8										
1950	2037	3621	4526	2775	4934	6167	25	33	39	16,8										
2100	2242	3986	4982	3055	5430	6788	25	33	39	18,5										
2300	2472	4395	5494	3369	5989	7486	26	35	41	19,7										
2400	2678	4760	5950	3648	6486	8107	26	35	41	19,2										
2600	2908	5170	6462	3962	7044	8805	27	36	42	20,4										
2800	3228	5739	7174	4399	7820	9775	27	36	42	21,6										