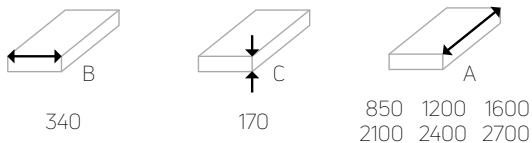


Trench convector F4V

Model **F4V** fits the best where **maximum power** and **comfort** is needed. Its heat exchanger has been designed for **heating and cooling**. This is possible thanks to our **four pipe system**, two pipes for heating and two pipes for cooling. Convector works on the basis of forced convection which is provided by **230 V tangencial fan**. Mostly it is used as **main source of heat**.

dimension (in mm)



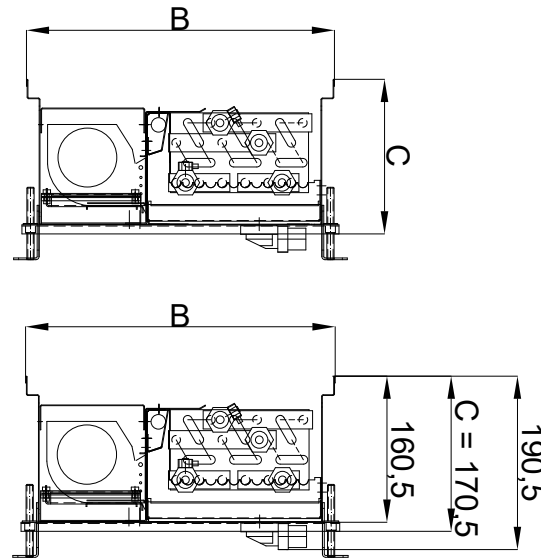
material of the duct



*special stainless steel AISI 316L for pool version upon request
**duct from galvanized steel has condensate tray from stainless steel

material of the heat exchanger

Heat exchanger is made from cooper pipes and aluminium lamellas **varnished in RAL9005**. The diameter of the pipes is 9,5 mm with 0,3 mm of thickness. Endings are with 1/2" connections.



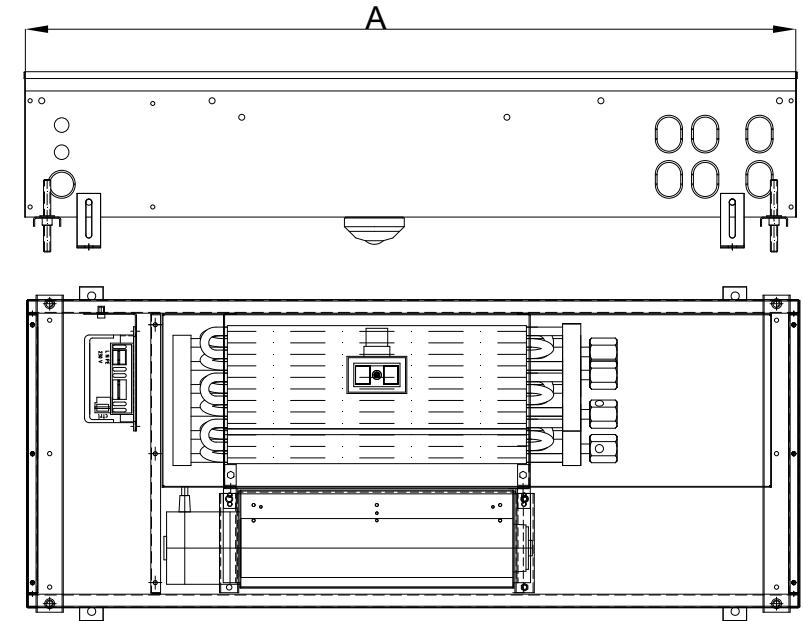
electricity connection

Fans work with **230 V EC** and are **controlled by 0-10 V**. They are connected to the thermostat with **RMS control module**. Space for lectricity connection is covered by covering plate. Water connection and electrical connection are separated from each other.

standard delivery accessories

Height adjustment feet, raised floor height adjustment feet, rubber grommets for pre-punched conection openings, flexible stainless steel hoses with seals, drainage set, chipboard cover (protection from the dust etc. during the construction work), struts (protection from deformation while pouring concrete floor)

| control voltage [V] | heat output [W] 75/65/20°C | | | cooling output [W] 16/18/27°C | | | sound power level dB(A) | | | power consumption [W] | |
|---------------------|-------------------------------|------|------|----------------------------------|------|------|----------------------------|----|----|--------------------------|----|
| | 3 | 6 | 9 | 3 | 6 | 9 | 3 | 6 | 9 | | |
| length A [mm] | 850 | 637 | 1132 | 1415 | 174 | 309 | 386 | 22 | 30 | 41 | 25 |
| | 1200 | 1274 | 2264 | 2830 | 347 | 618 | 772 | 23 | 31 | 41 | 30 |
| | 1600 | 1892 | 3363 | 4204 | 516 | 918 | 1147 | 25 | 33 | 42 | 48 |
| | 2100 | 2697 | 4795 | 5994 | 736 | 1308 | 1635 | 25 | 35 | 45 | 50 |
| | 2400 | 3296 | 5860 | 7325 | 900 | 1599 | 1999 | 27 | 35 | 45 | 68 |
| | 2700 | 3952 | 7026 | 8782 | 1078 | 1917 | 2397 | 28 | 36 | 46 | 86 |



water connection

Right and left connection is possible, needs to be specified. In standard there is a **bottom drainage** for condensation water, **side drainage** is possible upon the request. In case of bottom drainage additional 2 cm need to be added to the height. Standard drainage set is part of the delivery. Space for water connection is covered by covering plate. Water pipes could be connected either from the front side or longitudinal side.

technical data

Easy connection of 2 and more convectors together, max. operating pressure 10 bar, manual air vent, possible installation to double floor (upon the request), air inlets for external source of air can be installed (upon the request), tested in accordance with **DIN EN 442**